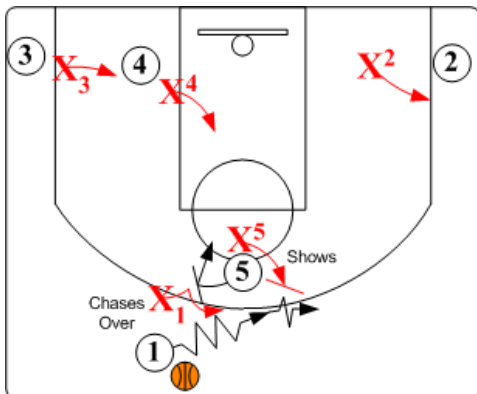


## UNA BASKETBALL TEAM CAMP

"On behalf of our program, our coaches and our players, I want to invite you to the 2012 UNA Basketball Team Camp. This is a great opportunity for you and your team to compete against some of the very best competition in the area and prepare for the upcoming season."

*Coach Bobby Champagne*



Phone: 256-765-4396 or 256-765-4398  
Fax: 256-765-4777 E-mail: [rjchampagne@una.edu](mailto:rjchampagne@una.edu)  
[www.bobbychampagne.com](http://www.bobbychampagne.com)

UNA Box 5052  
Florence, AL 35632

University of North Alabama  
Team Camp June 16, 2012



University  
of  
North Alabama  
Team Camp  
June 16, 2012



**UNA BASKETBALL  
TEAM CAMP 2012**

The University of North Alabama and Coach Bobby Champagne will host the fourth annual summer basketball Team



Camp. This summer's camp will be held at Flowers Hall and the student recreation center on the UNA campus. Each game will be officiated by high school officials.

The camp will allow coaches to get an evaluation of their young players and allow young players to get an early start on next year. The focus of team camp is to allow teams to play a number of games in a highly spirited and competitive environment. All games will have an athletic trainer on hand.

**What to Bring:**

Reversible Practice jerseys or uniforms are suggested for games. We will provide each team with lunch. We can arrange for meals on campus, at local restaurants, or for delivery to camp if you would like us to arrange this for you and your team.



**UNA TEAM CAMP  
June 16, 2012**

This camp is for varsity and junior varsity boys basketball teams. The emphasis of the camp is on allowing your team and players to have an opportunity to play some of the best talent from Alabama, Georgia, Mississippi, Tennessee and Louisiana. Each team will be guaranteed to play 3 games.

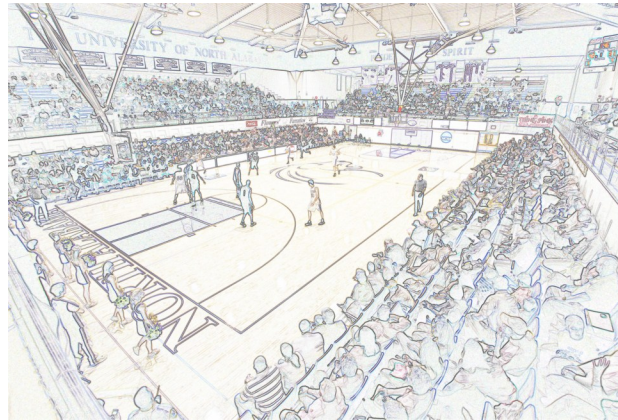


**Registration & Payment**

Registration Fee \$ 100.00 Non-Refundable Per Team  
Camp Fees: \$ 300.00 Per Team  
Each Coach will receive a UNA Basketball shirt and a stipend.  
Registration for camp should be received no later than June 15, 2011. All applications received after June 15th will be assessed a \$100 late fee. This allows us to accommodate all schedule changes that coaches might have.

**Contact Us For More Information**

For More Information, including camp availability and over-night campers, contact UNA basketball office at (256) 765-4398 or visit the website [www.bobbychampagne.com](http://www.bobbychampagne.com)



*Complete & Return to UNA Box 5052 \* Make Checks Payable to Bobby Champagne UNA Basketball Camp*

**UNA TEAM CAMP 2012**

Team Roster

School: \_\_\_\_\_  
 Varsity: \_\_\_\_\_ Jr Varsity: \_\_\_\_\_  
 Coach: \_\_\_\_\_  
 Asst. Coach: \_\_\_\_\_  
 Address: \_\_\_\_\_  
 City: \_\_\_\_\_  
 State: \_\_\_\_\_ Zip: \_\_\_\_\_  
 Cell Phone #: \_\_\_\_\_  
 Phone #: \_\_\_\_\_  
 E-mail: \_\_\_\_\_  
 Fax #: \_\_\_\_\_

**TEAM ROSTER**

1. \_\_\_\_\_
2. \_\_\_\_\_
3. \_\_\_\_\_
4. \_\_\_\_\_
5. \_\_\_\_\_
6. \_\_\_\_\_
7. \_\_\_\_\_
8. \_\_\_\_\_
9. \_\_\_\_\_
10. \_\_\_\_\_

Each additional player over 10 will be an additional \$20 per player.